

“VENERE NASCOSTO” SYSTEM

SYSTEM TYPE:

- Hidden hooks

CLADDING TILES TYPOLOGY:

- Terracotta panels;
- Stone slabs, simple or multi-layer, in small sizes;
- Ceramic tiles or Laminate boards, if it is possible to make kerfs on the edges;
- Other materials in small sizes on which is possible to make kerfs on the edges;

WORKINGS ON TILE:

- none

SYSTEM COMPONENTS:

The “Venere Nascosto” system is made of these components:

- extruded profile type “CV1” in aluminium alloy EN 6060 T5 (or similar, when needed);
- hooks type “V3” and “V4” to support and retain tiles, in stainless steel EN 1.4310 (AISI 304);
- springs type “V2” to fix hooks on “CV1” profile, in stainless steel EN 1.4310 (AISI 304);
- standard supporting stirrups type “A13” e “B13”, from die cast aluminium alloy EN 6060;
- nuts and bolts to fix “CV1” profile on the stirrups, in stainless steel class A2;
- anchors to fix the stirrups on the wall, mechanical or epoxy-resin based, as needed;
- neoprene gasket strips, to gauge the tiles, the hooks and the aluminium profile, in different thickness as needed;
- springs type “Iana” in tempered stainless steel, to support the insulating panels and press them on the wall surface, when thermal insulation is needed.

SYSTEM DESCRIPTION:

The vertical mullion “CV1” is put in place on the wall with a pace depending on the panels width and the design vertical joint between the panels.

The “CV1” profile is designed and shaped in order to fit without drillings the following components:

- the stirrups supporting the mullions on the wall, put in place with their design pace;
- the hooks “V3” and “V4” to support the panels, and their fixing springs “V2”, to be inserted using a small hammer in the proper groove of the vertical profile, put in place with a pace depending on the tiles high and the design horizontal joint;
- the insulation springs, if needed.

This arrangement of the components protects the coatings (oxidation or painting) from corrosion and assure the structure a longer lifetime.

The main characteristic of this “Venere Nascosto” hidden system is that each panel must have a continuous kerf in the superior and inferior edge, so that the hooks can insert into the kerfs and are not visible from outside the façade.

Each panel is solidarized with the hooks and the vertical profile using neoprene gasket strips of useful thickness and silicon drops, when needed.

When all the components are put in place, each panel can be set up or dismantled one at a time.

The supporting structure makes possible any type of regulation and it is able to protect from wind action and to allow the thermal expansion of all the components.

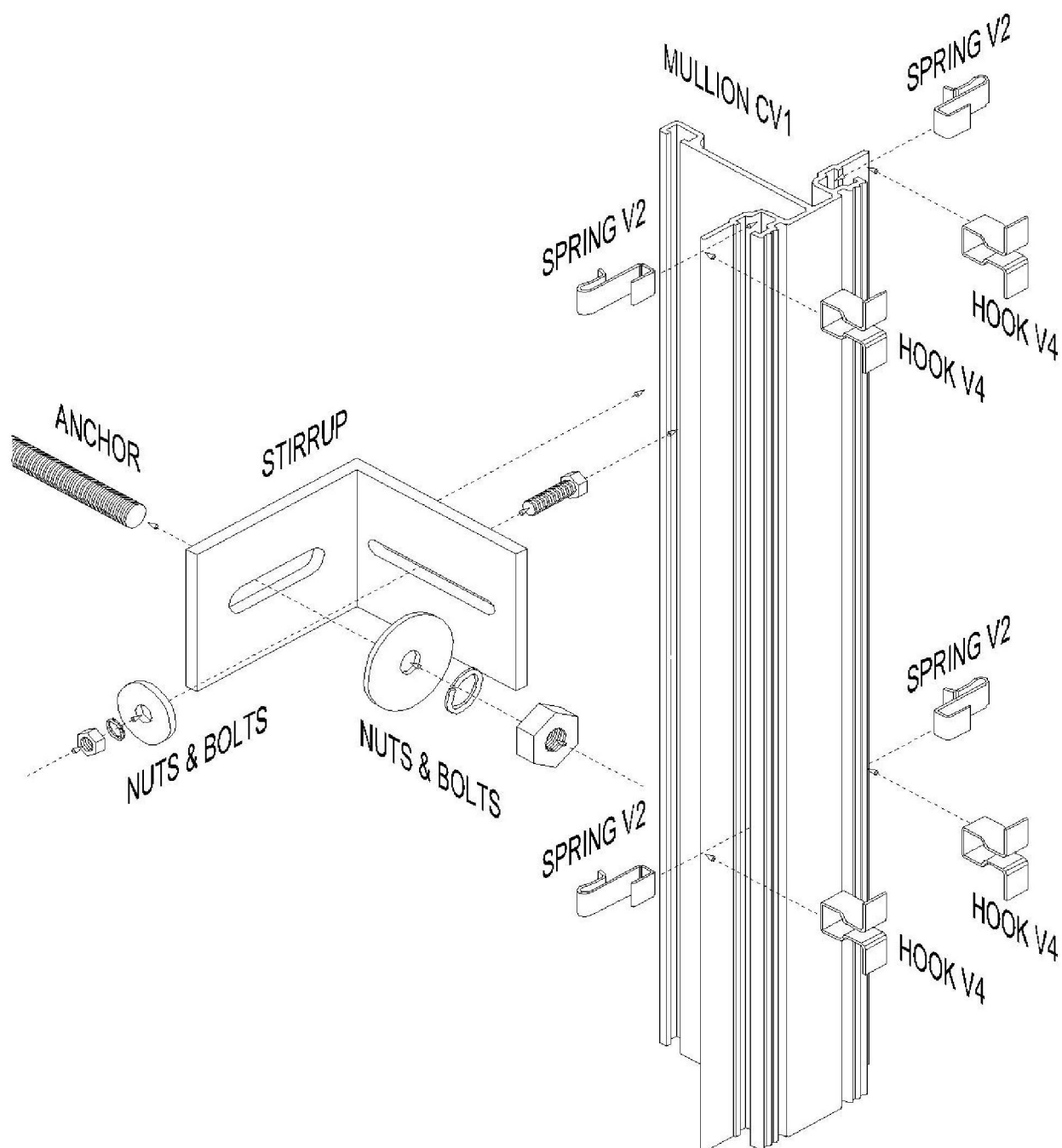
SYSTEM SIZES:

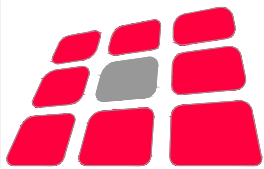
- The standard distance between the wall and the INTERNAL face of the tiles is 110 mm, with a standard regulation of ± 25 mm.
- The standard width of the kerf is to be 2 mm at least, from 3 mm to 12 mm from the panel backside

Standard details of the system in the next page.

“VENERE NASCOSTO ” SYSTEM

WARNING! THE ACTUAL COMPONENTS MAY CHANGE DEPENDING ON REAL SPECIFICS.





DALLERA
Tecnologie S.r.l.
Società unipersonale

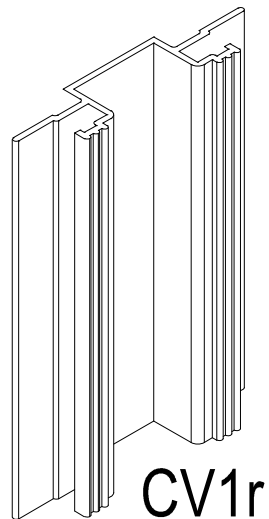
Via Trivulzina, 13/48 - Pad. 20 - 20864 Agrate Brianza (MB)

Tel. 039 9711592 - Fax 039 9711593

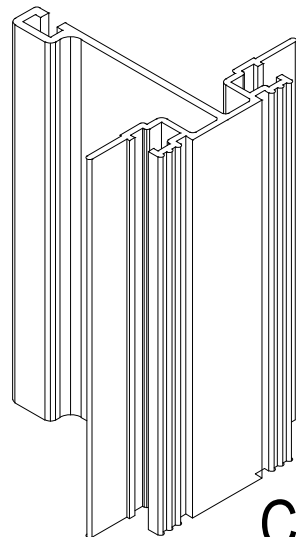
www.dalleratecnologie.com progetti@dalleratecnologie.com

"VENERE N" HIDDEN SYSTEM

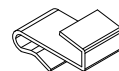
STANDARD COMPONENTS



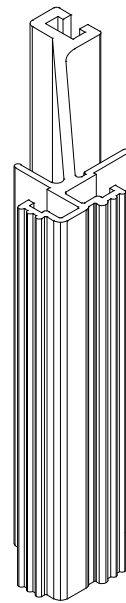
CV1r



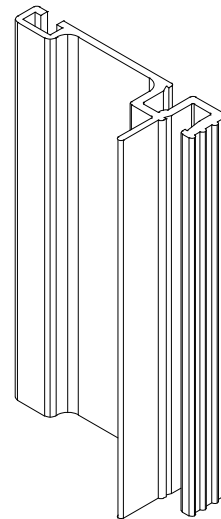
CV1



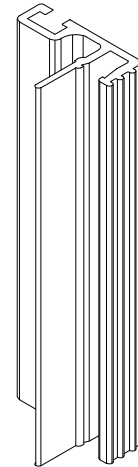
V2 SPRING



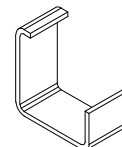
CV1a



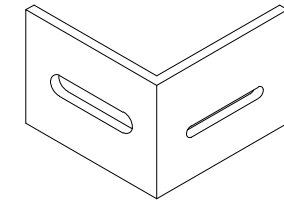
CV1m



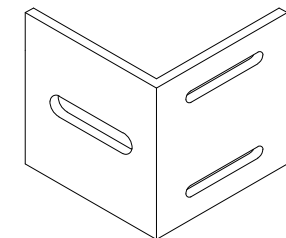
CV1bm



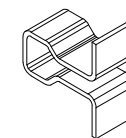
V3 HOOK



SINGLE STIRRUP



DOUBLE STIRRUP



V4 HOOK

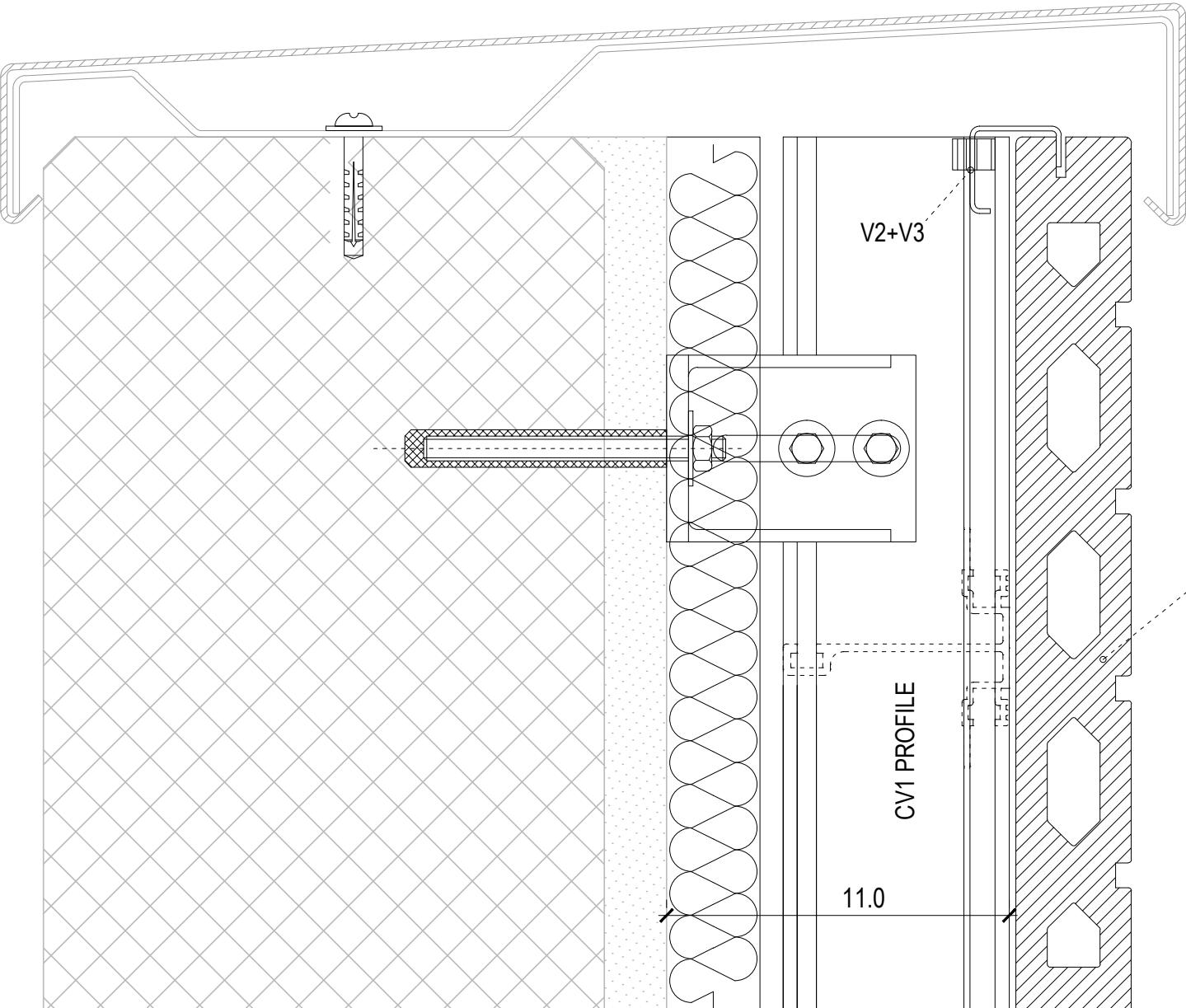
"VENERE N" HIDDEN SYSTEM

STANDARD DETAIL FOR

FACADE TOP

vertical cross-section - SCALE 1:2

TOP TIN-PLATE



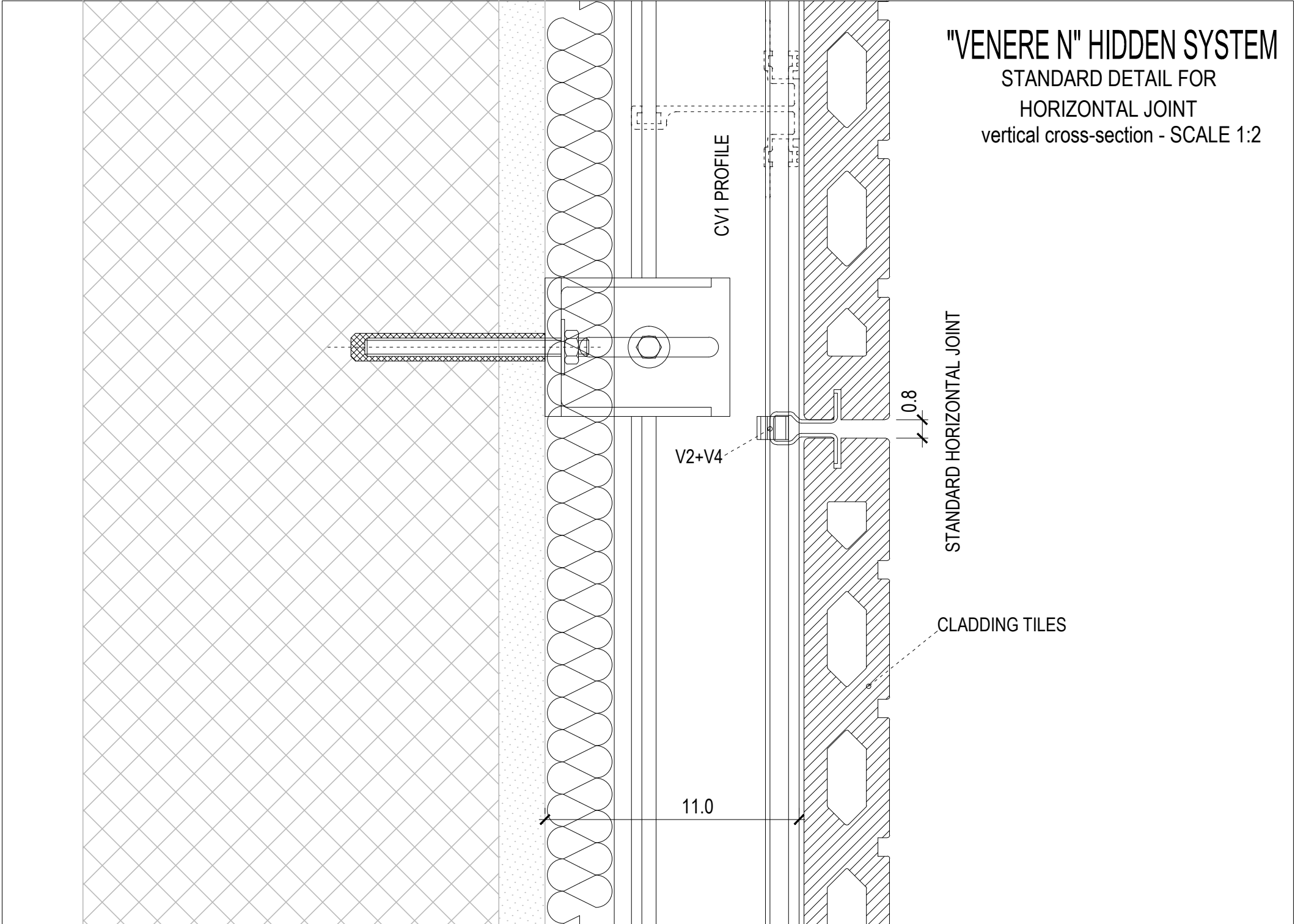
V2+V3

CV1 PROFILE

11.0

CLADDING TILES

"VENERE N" HIDDEN SYSTEM
STANDARD DETAIL FOR
HORIZONTAL JOINT
vertical cross-section - SCALE 1:2



CV1 PROFILE

V2+V4

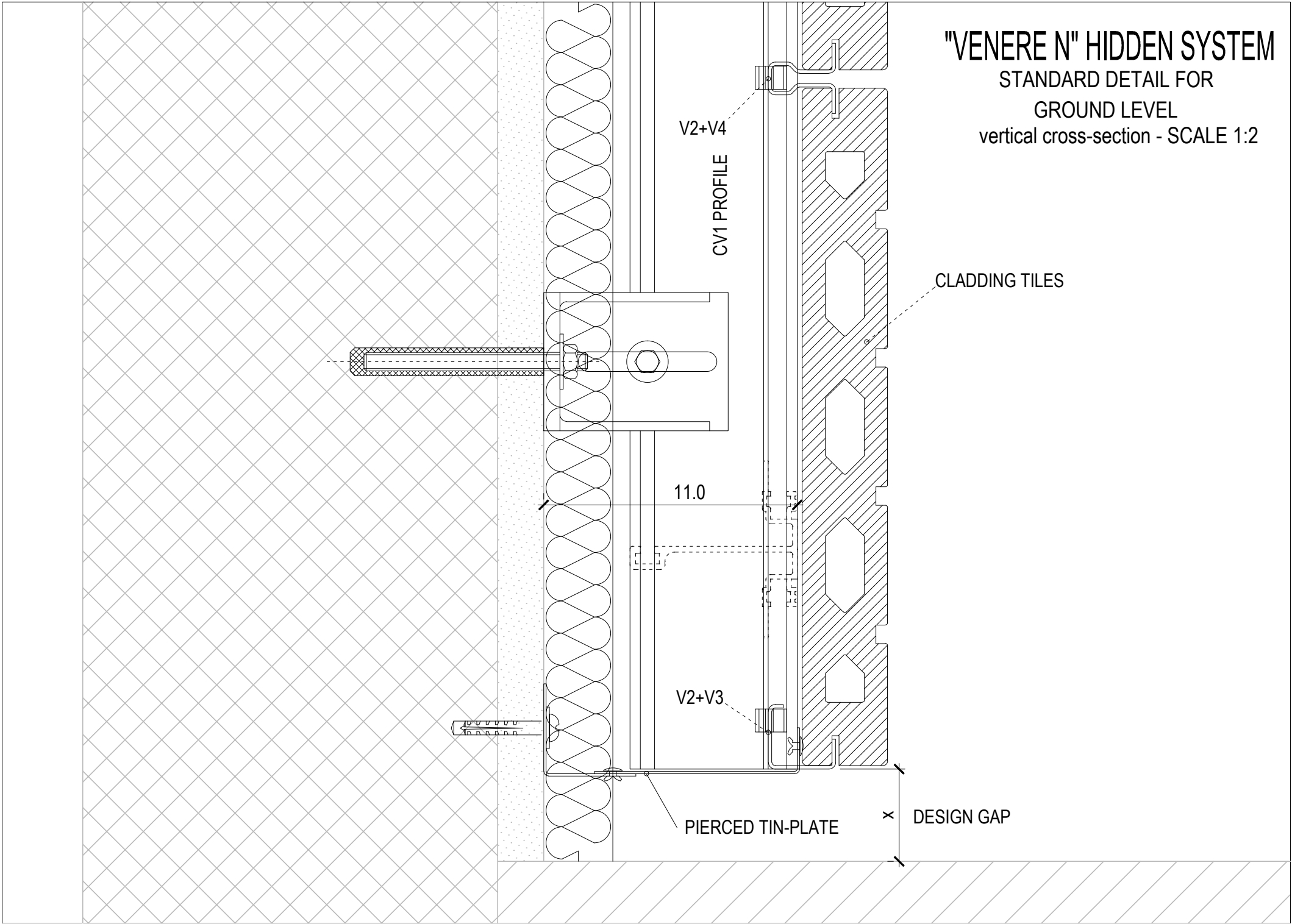
0.8

STANDARD HORIZONTAL JOINT

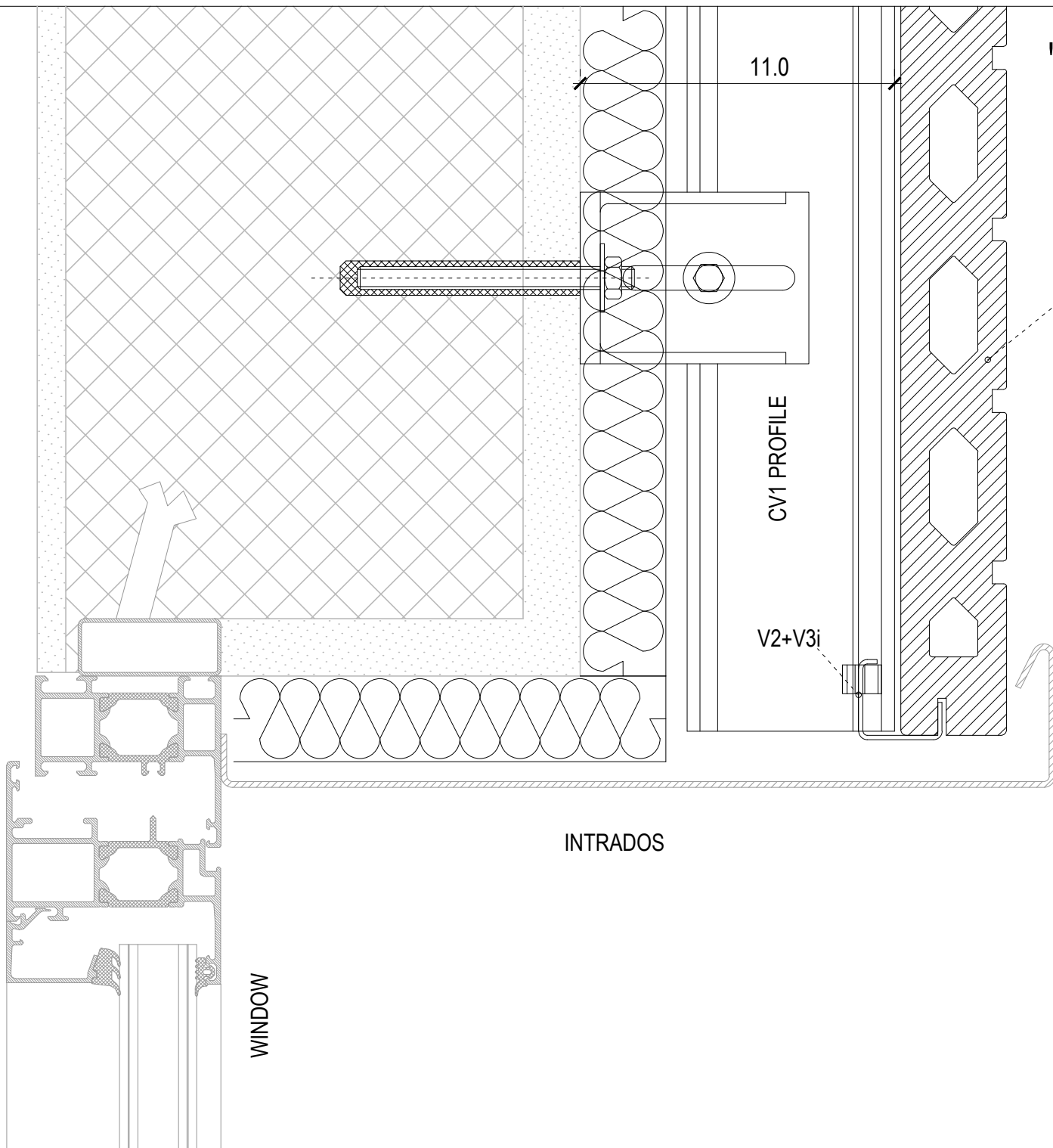
CLADDING TILES

11.0

"VENERE N" HIDDEN SYSTEM
STANDARD DETAIL FOR
GROUND LEVEL
vertical cross-section - SCALE 1:2



"VENERE N" HIDDEN SYSTEM
STANDARD DETAIL FOR
WINDOW INTRADOS
vertical cross-section - SCALE 1:2



11.0

CV1 PROFILE

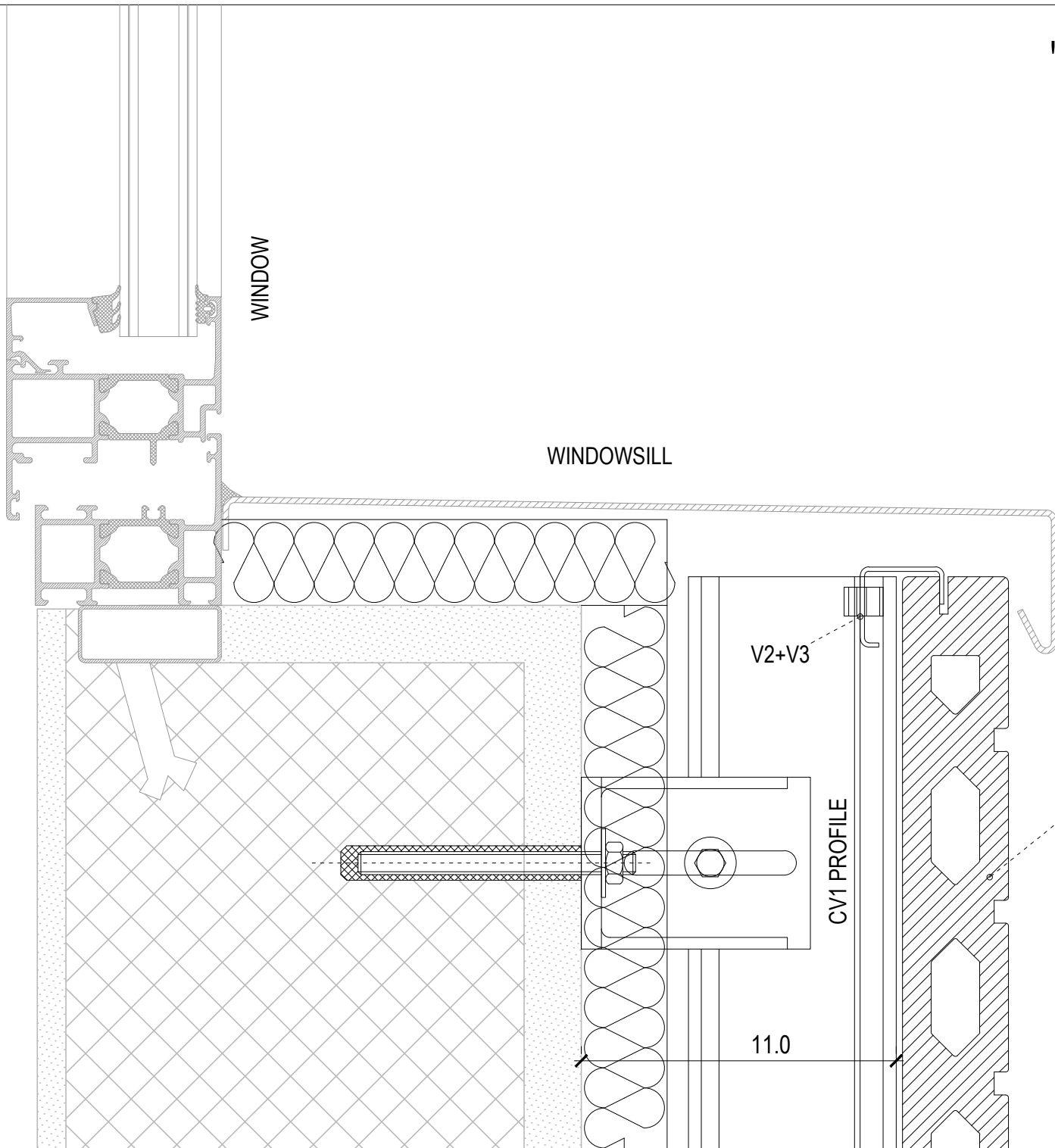
V2+V3i

CLADDING TILES

INTRADOS

WINDOW

"VENERE N" HIDDEN SYSTEM
STANDARD DETAIL FOR
WINDOWSILL
vertical cross-section - SCALE 1:2



WINDOW

WINDOWSILL

V2+V3

CV1 PROFILE

CLADDING TILES

11.0

11.0

"VENERE N" HIDDEN SYSTEM
STANDARD DETAIL FOR
WINDOW REVEAL

horizontal cross-section - SCALE 1:2

WINDOW

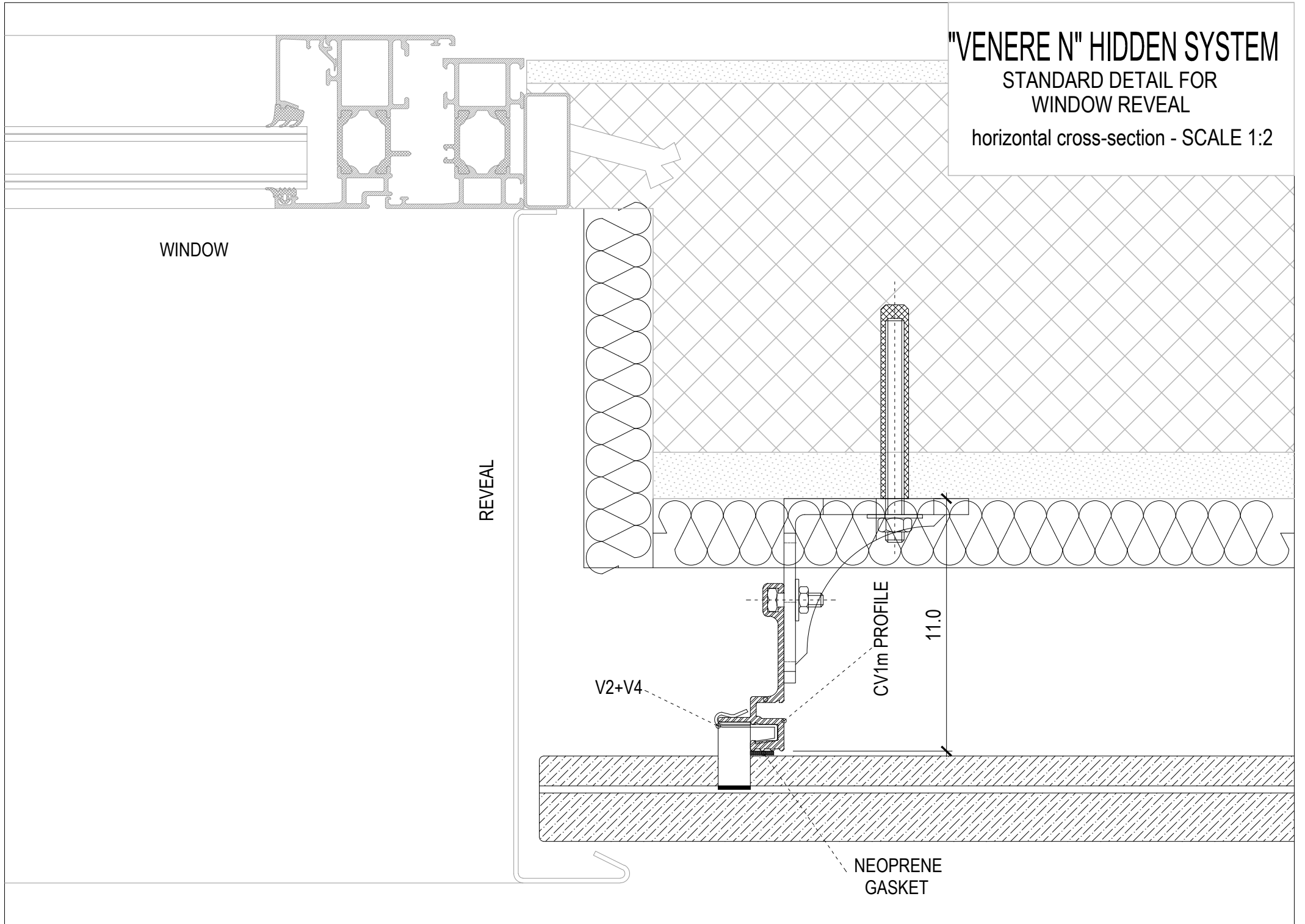
REVEAL

V2+V4

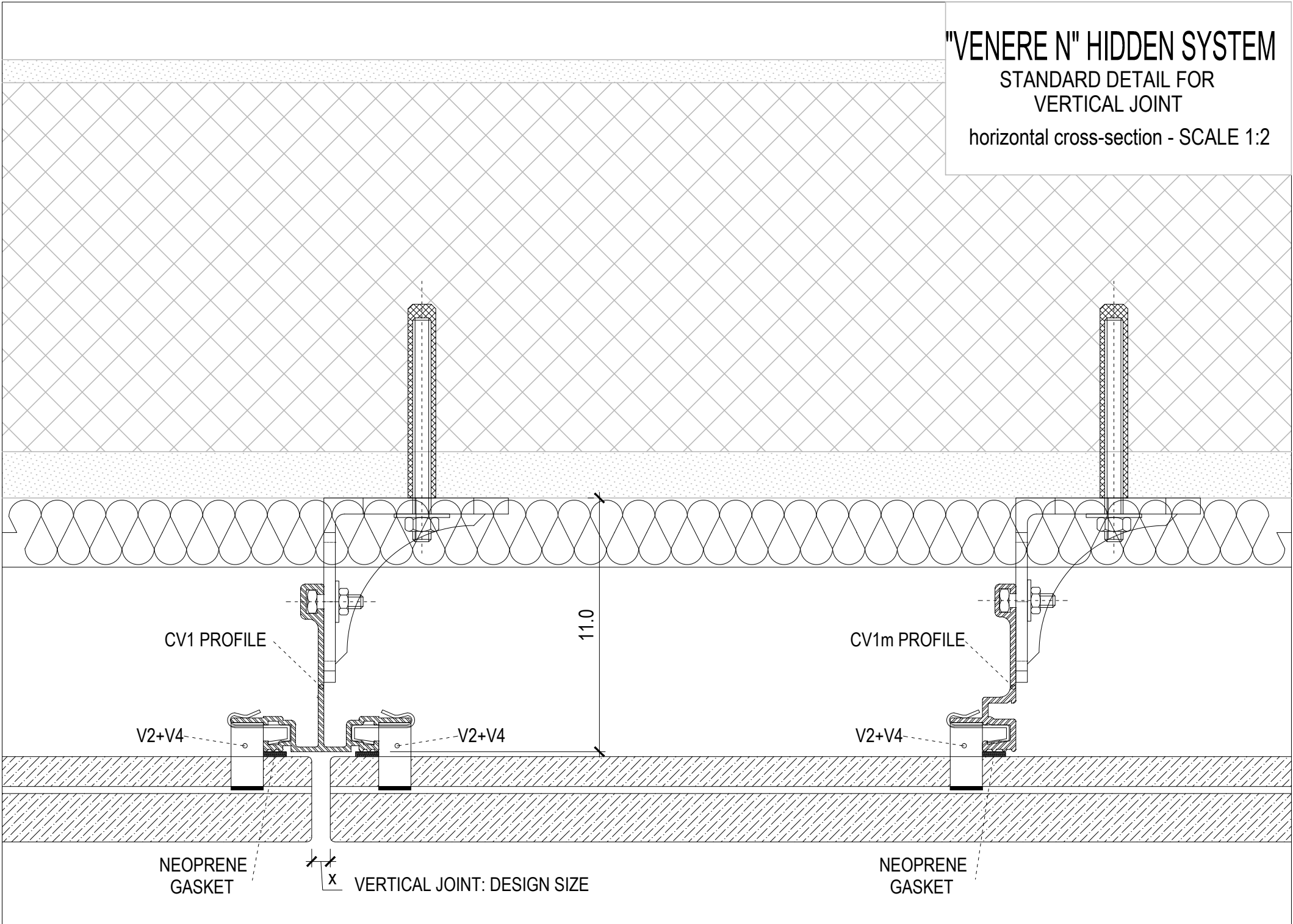
CV1m PROFILE

11.0

NEOPRENE
GASKET



"VENERE N" HIDDEN SYSTEM
STANDARD DETAIL FOR
VERTICAL JOINT
horizontal cross-section - SCALE 1:2

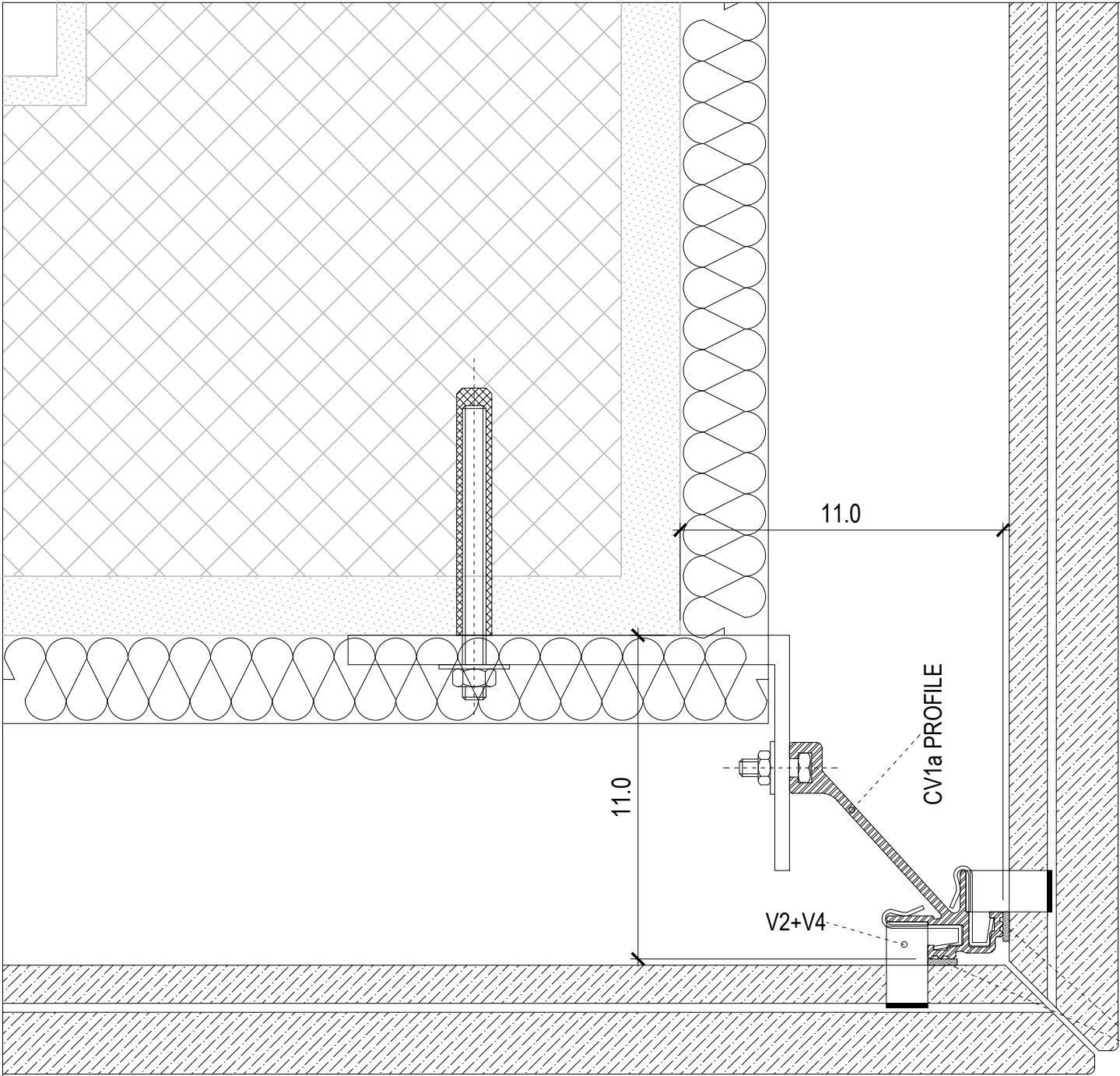


"VENERE N" HIDDEN SYSTEM

STANDARD DETAIL FOR

EXTERNAL CORNER

horizontal cross-section - SCALE 1:2



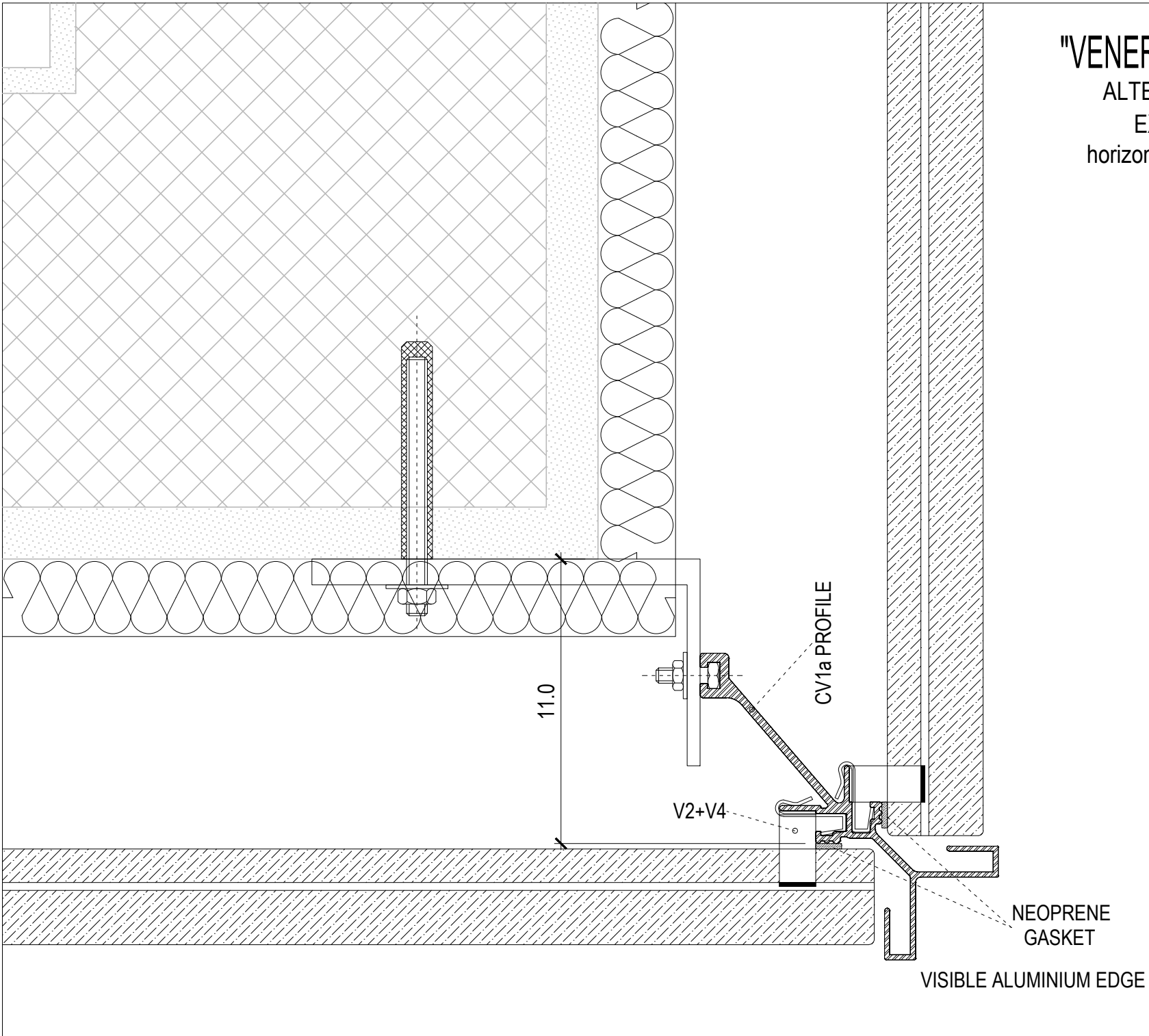
CV1a PROFILE

V2+V4

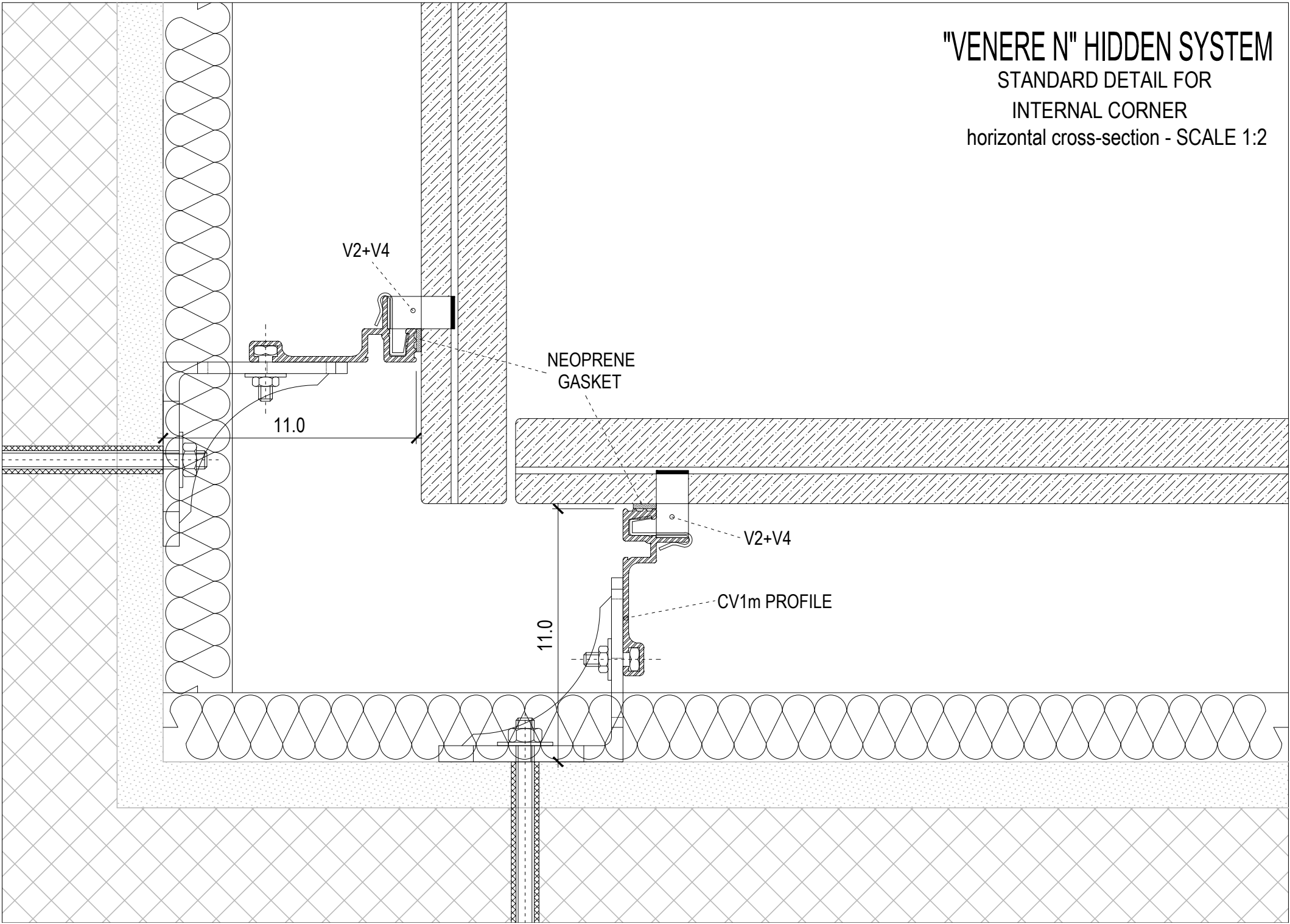
NEOPRENE GASKET

CORNER CUT PANELS

"VENERE N" HIDDEN SYSTEM
ALTERNATIVE DETAIL FOR
EXTERNAL CORNER
horizontal cross-section - SCALE 1:2



"VENERE N" HIDDEN SYSTEM
STANDARD DETAIL FOR
INTERNAL CORNER
horizontal cross-section - SCALE 1:2



"VENERE N" HIDDEN SYSTEM

PANEL SET-UP

vertical cross-section - SCALE 1:2

